

ROMAN MOSAICS ACROSS THE EMPIRE

OBJECT LIST

ROMAN MOSAICS ACROSS THE EMPIRE

At the J. Paul Getty Museum, Getty Villa
March 30–September 12, 2016



1. [Orpheus and the Animals](#) (central panel)
Gallo-Roman, from Saint-Romain-en-Gal, France, A.D. 150–200
Stone and glass
73 ¼ x 74 7/16 in.
The J. Paul Getty Museum, Villa Collection, Malibu, California
62.AH.2.13



2. [Hare and Birds with Geometric Designs](#) (central panel, top and bottom border panels)
Roman, from Antioch, Syria (present-day Antakya, Turkey), about A.D. 400
Stone
99 ½ x 168 in.
The J. Paul Getty Museum, Villa Collection, Malibu, California
70.AH.96.1–3



3. [Combat between Dares and Entellus](#)
Gallo-Roman, from Villelaure, France, A.D. 175–200
Stone and glass
81 7/8 x 81 7/8 in.
The J. Paul Getty Museum, Villa Collection, Malibu, California
71.AH.106



4. [Griffin](#)
Roman, from Syria, A.D. 400–600
Stone
63 x 68 ¼ in.
The J. Paul Getty Museum, Villa Collection, Malibu, California
71.AH.113



ROMAN MOSAICS ACROSS THE EMPIRE



5. **Bear Hunt**
Roman, from Baiae, Italy, A.D. 300–400
Stone
260 ¼ x 342 1/8 in.
The J. Paul Getty Museum, Villa Collection, Malibu,
California
72.AH.76.1-23



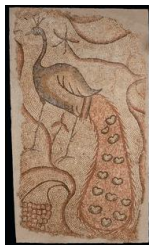
6. **Lion Attacking an Onager**
Roman, from Hadrumetum (present-day Sousse,
Tunisia), A.D. 150–200
Stone and glass
38 ¾ x 63 in.
The J. Paul Getty Museum, Villa Collection, Malibu,
California
73.AH.75



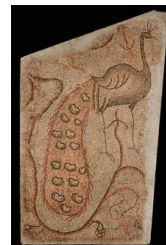
7. **Lion Chasing a Bull**
Roman, from Syria, possibly Emesa (present-day
Homs), A.D. 400–600
Stone
32 x 59 in.
The J. Paul Getty Museum, Villa Collection, Malibu,
California, Gift of Joel Malter
75.AH.115



8. **Bull**
Roman, from Syria, possibly Emesa (present-day
Homs), A.D. 400–600
Stone
49 3/8 x 70 ½ in.
The J. Paul Getty Museum, Villa Collection, Malibu,
California, Gift of William Wahler
75.AH.117



9. **Peacock Facing Left**
Roman, from Syria, possibly Emesa (present-day
Homs), A.D. 400–600
Stone
77 ½ x 45 ½ in.
The J. Paul Getty Museum, Villa Collection, Malibu,
California, Gift of William Wahler
75.AH.121



10. **Peacock Facing Right**
Roman, from Syria, possibly Emesa (present-day
Homs), A.D. 400–600
Stone
82 ¾ x 51 in.
The J. Paul Getty Museum, Villa Collection, Malibu,
California, Gift of William Wahler
75.AH.122



ROMAN MOSAICS

ACROSS THE EMPIRE



11. [Diana and Callisto Surrounded by a Hunt](#)
Gallo-Roman, from Villedaure, France, A.D. 175–200
Stone and glass
116 ¾ x 107 in.
Lent by the Los Angeles County Museum of Art, from
the Phil Berg Collection, M.71.73.9
VL.2016.1



12. [Port Scene](#)
Roman, from North Africa, A.D. 1–300
Stone and glass
51 x 70 ½ in.
Courtesy of the Ferrell Collection
VL.2016.2

