

IN FOCUS

R O B E R T

# M A P P L E T H O R P E



1. Robert Mapplethorpe  
American, 1946–1989  
*Leatherman #1*, 1970  
Mixed media  
Frame: 38 x 48 x 2.5 cm (14 15/16 x 18 7/8 x 1 in.)  
The J. Paul Getty Museum, Los Angeles, Jointly acquired by The J. Paul Getty Trust and the Los Angeles County Museum of Art. Partial gift of The Robert Mapplethorpe Foundation; partial purchase with funds provided by The J. Paul Getty Trust and the David Geffen Foundation.  
© Robert Mapplethorpe Foundation  
2011.9.2



2. Robert Mapplethorpe  
American, 1946–1989  
*Andy Warhol*, 1972  
Mixed media  
Frame: 48.5 x 42.5 x 2.5 cm (19 1/8 x 16 3/4 x 1 in.)  
The J. Paul Getty Museum, Los Angeles, Jointly acquired by The J. Paul Getty Trust and the Los Angeles County Museum of Art. Partial gift of The Robert Mapplethorpe Foundation; partial purchase with funds provided by The J. Paul Getty Trust and the David Geffen Foundation.  
© Robert Mapplethorpe Foundation  
2011.9.6



3. Robert Mapplethorpe  
American, 1946–1989  
*Banana & Keys*, 1973  
Mixed media  
Frame: 48.3 x 41.4 x 12.7 cm (19 x 16 5/16 x 5 in.)  
The J. Paul Getty Museum, Los Angeles, Jointly acquired by The J. Paul Getty Trust and the Los Angeles County Museum of Art. Partial gift of The Robert Mapplethorpe Foundation; partial purchase with funds provided by The J. Paul Getty Trust and the David Geffen Foundation.  
© Robert Mapplethorpe Foundation  
2011.9.7



4. Robert Mapplethorpe  
American, 1946–1989  
*Patti Smith, negative 1975; print 1995*  
Gelatin silver print  
Image: 35.8 x 35.5 cm (14 1/8 x 14 in.)  
The J. Paul Getty Museum, Los Angeles, Jointly acquired by the Los Angeles County Museum of Art, with funds provided by The David Geffen Foundation, and The J. Paul Getty Trust  
© Robert Mapplethorpe Foundation  
2011.7.1

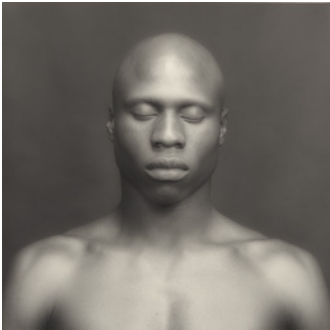




5. Robert Mapplethorpe  
American, 1946–1989  
*Jim, Sausalito, 1977*  
Gelatin silver print  
Image: 35.2 x 35.3 cm (13 7/8 x 13 7/8 in.)  
The J. Paul Getty Museum, Los Angeles, Jointly acquired by the Los Angeles County Museum of Art, with funds provided by The David Geffen Foundation, and The J. Paul Getty Trust  
© Robert Mapplethorpe Foundation  
2011.7.8



6. Robert Mapplethorpe  
American, 1946–1989  
*Lisa Lyon, 1982*  
Gelatin silver print  
Image: 48.8 x 38.7 cm (19 3/16 x 15 1/4 in.)  
The J. Paul Getty Museum, Los Angeles, Jointly acquired by the Los Angeles County Museum of Art, with funds provided by The David Geffen Foundation, and The J. Paul Getty Trust  
© Robert Mapplethorpe Foundation  
2011.7.14



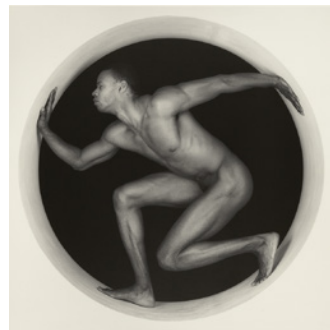
7. Robert Mapplethorpe  
American, 1946–1989  
*Ken Moody, 1983*  
Gelatin silver print  
Image: 38.5 x 38.7 cm (15 3/16 x 15 1/4 in.)  
The J. Paul Getty Museum, Los Angeles, Jointly acquired by the Los Angeles County Museum of Art, with funds provided by The David Geffen Foundation, and The J. Paul Getty Trust  
© Robert Mapplethorpe Foundation  
2011.7.16



8. Robert Mapplethorpe  
American, 1946–1989  
*Self-Portrait, negative 1980; print 1990*  
Gelatin silver print  
Image: 35.6 x 35.6 cm (14 x 14 in.)  
The J. Paul Getty Museum, Los Angeles, Jointly acquired by The J. Paul Getty Trust and the Los Angeles County Museum of Art. Partial gift of The Robert Mapplethorpe Foundation; partial purchase with funds provided by The J. Paul Getty Trust and the David Geffen Foundation.  
© Robert Mapplethorpe Foundation  
2011.9.21



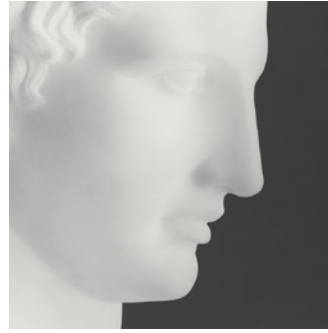
9. Robert Mapplethorpe  
American, 1946–1989  
*Ken and Lydia and Tyler, negative 1985; print 2004*  
Gelatin silver print  
Image: 38.4 x 38.2 cm (15 1/8 x 15 1/16 in.)  
The J. Paul Getty Museum, Los Angeles, Jointly acquired by the Los Angeles County Museum of Art, with funds provided by The David Geffen Foundation, and The J. Paul Getty Trust  
© Robert Mapplethorpe Foundation  
2011.7.19



10. Robert Mapplethorpe  
American, 1946–1989  
*Thomas, negative 1987; print 1994*  
Gelatin silver print  
Image: 48.8 x 48.8 cm (19 3/16 x 19 3/16 in.)  
The J. Paul Getty Museum, Los Angeles, Jointly acquired by the Los Angeles County Museum of Art, with funds provided by The David Geffen Foundation, and The J. Paul Getty Trust  
© Robert Mapplethorpe Foundation  
2011.7.31



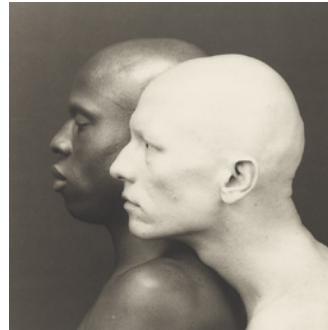
11. Robert Mapplethorpe  
American, 1946–1989  
*Self-Portrait*, 1985  
Gelatin silver print  
Image: 38.7 x 38.6 cm (15 1/4 x 15 3/16 in.)  
The J. Paul Getty Museum, Los Angeles, Jointly acquired by the Los Angeles County Museum of Art, with funds provided by The David Geffen Foundation, and The J. Paul Getty Trust  
© Robert Mapplethorpe Foundation  
2011.7.21



12. Robert Mapplethorpe  
American, 1946–1989  
*Ermes*, negative 1988; print 1990  
Gelatin silver print  
Image: 49 x 49 cm (19 5/16 x 19 5/16 in.)  
The J. Paul Getty Museum, Los Angeles, Jointly acquired by The J. Paul Getty Trust and the Los Angeles County Museum of Art. Partial gift of The Robert Mapplethorpe Foundation; partial purchase with funds provided by The J. Paul Getty Trust and the David Geffen Foundation.  
© Robert Mapplethorpe Foundation  
2011.9.36



13. Robert Mapplethorpe  
American, 1946–1989  
*Calla Lily*, negative 1988; print 1990  
Gelatin silver print  
Image: 49 x 49 cm (19 5/16 x 19 5/16 in.)  
The J. Paul Getty Museum, Los Angeles, Jointly acquired by The J. Paul Getty Trust and the Los Angeles County Museum of Art. Partial gift of The Robert Mapplethorpe Foundation; partial purchase with funds provided by The J. Paul Getty Trust and the David Geffen Foundation.  
© Robert Mapplethorpe Foundation  
2011.9.26



14. Robert Mapplethorpe  
American, 1946–1989  
*Ken Moody and Robert Sherman*, 1984  
Platinum print  
Image: 49.4 x 50.2 cm (19 7/16 x 19 3/4 in.)  
The J. Paul Getty Museum, Los Angeles, Jointly acquired by the Los Angeles County Museum of Art, with funds provided by The David Geffen Foundation, and The J. Paul Getty Trust  
© Robert Mapplethorpe Foundation  
2011.7.23