

IN FOCUS

R O B E R T

# M A P P L E T H O R P E

## ILLUSTRATED CHECKLIST

### *In Focus: Robert Mapplethorpe*

At the J. Paul Getty Museum, Getty Center  
October 23, 2012–March 24, 2013

1. *Parrot Tulips*, negative 1988; print 1990  
Robert Mapplethorpe (American, 1946–1989)  
Gelatin silver print  
49 x 49 cm (19 5/16 x 19 5/16 in.)  
Jointly acquired by The J. Paul Getty Trust and the Los Angeles County Museum of Art. Partial gift of The Robert Mapplethorpe Foundation; partial purchase with funds provided by The J. Paul Getty Trust and the David Geffen Foundation.  
© Robert Mapplethorpe Foundation  
2011.9.31



2. *Untitled (Charles and Jim)*, 1974  
Robert Mapplethorpe (American, 1946–1989)  
Polaroid instant print  
8.8 x 11.4 cm (3 7/16 x 4 1/2 in.)  
Jointly acquired by The J. Paul Getty Trust and the Los Angeles County Museum of Art. Partial gift of The Robert Mapplethorpe Foundation; partial purchase with funds provided by The J. Paul Getty Trust and the David Geffen Foundation.  
© Robert Mapplethorpe Foundation  
2011.9.56



-more-



The J. Paul Getty Trust  
Communications Department

1200 Getty Center Drive, Suite 403  
Los Angeles, CA 90049-1681

Tel 310 440 7360 www.getty.edu  
Fax 310 440 7722

3. *Untitled (Boaz), 1973*

Robert Mapplethorpe (American, 1946–1989)

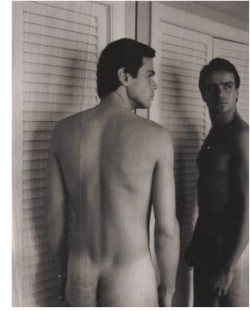
Polaroid instant print

11.4 x 8.9 cm (4 1/2 x 3 1/2 in.)

Jointly acquired by The J. Paul Getty Trust and the Los Angeles County Museum of Art. Partial gift of The Robert Mapplethorpe Foundation; partial purchase with funds provided by The J. Paul Getty Trust and the David Geffen Foundation.

© Robert Mapplethorpe Foundation

2011.9.52



4. *Untitled (Eddie, NY), 1972*

Robert Mapplethorpe (American, 1946–1989)

Polaroid instant print

9.5 x 7.3 cm (3 3/4 x 2 7/8 in.)

Jointly acquired by The J. Paul Getty Trust and the Los Angeles County Museum of Art. Partial gift of The Robert Mapplethorpe Foundation; partial purchase with funds provided by The J. Paul Getty Trust and the David Geffen Foundation.

© Robert Mapplethorpe Foundation

2011.9.45



5. *Untitled, 1974*

Robert Mapplethorpe (American, 1946–1989)

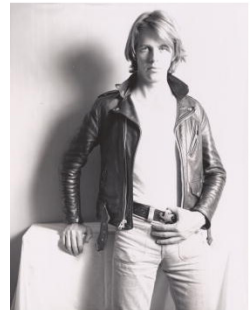
Polaroid instant print

11.4 x 8.9 cm (4 1/2 x 3 1/2 in.)

Jointly acquired by The J. Paul Getty Trust and the Los Angeles County Museum of Art. Partial gift of The Robert Mapplethorpe Foundation; partial purchase with funds provided by The J. Paul Getty Trust and the David Geffen Foundation.

© Robert Mapplethorpe Foundation

2011.9.55



6. *Leatherman #1, 1970*

Robert Mapplethorpe (American, 1946–1989)

Mixed media

Frame: 38 x 48 x 2.5 cm (14 15/16 x 18 7/8 x 1 in.)

Jointly acquired by The J. Paul Getty Trust and the Los Angeles County Museum of Art. Partial gift of The Robert Mapplethorpe Foundation; partial purchase with funds provided by The J. Paul Getty Trust and the David Geffen Foundation.

© Robert Mapplethorpe Foundation

2011.9.2



**IMAGE AVAILABLE FOR PRESS**

7. *Andy Warhol*, 1972

Robert Mapplethorpe (American, 1946–1989)  
Mixed media

Frame: 48.5 x 42.5 x 2.5 cm (19 1/8 x 16 3/4 x 1 in.)

Jointly acquired by The J. Paul Getty Trust and the Los Angeles County Museum of Art. Partial gift of The Robert Mapplethorpe Foundation; partial purchase with funds provided by The J. Paul Getty Trust and the David Geffen Foundation.

© Robert Mapplethorpe Foundation  
2011.9.6

[IMAGE AVAILABLE FOR PRESS](#)



8. *Banana & Keys*, 1973

Robert Mapplethorpe (American, 1946–1989)  
Mixed media

Frame: 48.3 x 41.4 x 12.7 cm (19 x 16 5/16 x 5 in.)

Jointly acquired by The J. Paul Getty Trust and the Los Angeles County Museum of Art. Partial gift of The Robert Mapplethorpe Foundation; partial purchase with funds provided by The J. Paul Getty Trust and the David Geffen Foundation.

© Robert Mapplethorpe Foundation  
2011.9.7

[IMAGE AVAILABLE FOR PRESS](#)



9. *Holly Solomon*, negative 1976; print 2005

Robert Mapplethorpe (American, 1946–1989)  
Gelatin silver print

35.3 x 35.5 cm (13 7/8 x 14 in.)

Jointly acquired by The J. Paul Getty Trust and the Los Angeles County Museum of Art with funds provided by The J. Paul Getty Trust and the David Geffen Foundation.

© Robert Mapplethorpe Foundation  
2011.7.3



10. *Patti Smith*, negative 1975; print 1995

Robert Mapplethorpe (American, 1946–1989)  
Gelatin silver print

35.8 x 35.5 cm (14 1/8 x 14 in.)

Jointly acquired by The J. Paul Getty Trust and the Los Angeles County Museum of Art with funds provided by The J. Paul Getty Trust and the David Geffen Foundation.

© Robert Mapplethorpe Foundation  
2011.7.1

[IMAGE AVAILABLE FOR PRESS](#)



11. *Jim, Sausalito, 1977*

Robert Mapplethorpe (American, 1946–1989)

Gelatin silver print

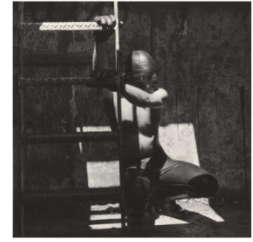
35.2 x 35.3 cm (13 7/8 x 13 7/8 in.)

Jointly acquired by The J. Paul Getty Trust and the Los Angeles County Museum of Art with funds provided by The J. Paul Getty Trust and the David Geffen Foundation.

© Robert Mapplethorpe Foundation

2011.7.8

**IMAGE AVAILABLE FOR PRESS**



12. *Lisa Lyon, 1982*

Robert Mapplethorpe (American, 1946–1989)

Gelatin silver print

48.8 x 38.7 cm (19 3/16 x 15 1/4 in.)

Jointly acquired by The J. Paul Getty Trust and the Los Angeles County Museum of Art with funds provided by The J. Paul Getty Trust and the David Geffen Foundation.

© Robert Mapplethorpe Foundation

2011.7.14

**IMAGE AVAILABLE FOR PRESS**



13. *Ken Moody, 1983*

Robert Mapplethorpe (American, 1946–1989)

Gelatin silver print

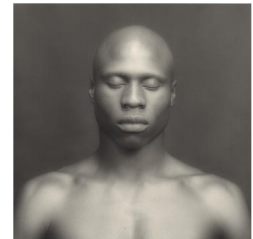
38.5 x 38.7 cm (15 3/16 x 15 1/4 in.)

Jointly acquired by The J. Paul Getty Trust and the Los Angeles County Museum of Art with funds provided by The J. Paul Getty Trust and the David Geffen Foundation.

© Robert Mapplethorpe Foundation

2011.7.16

**IMAGE AVAILABLE FOR PRESS**



14. *Lydia Cheng, negative 1987; print 2004*

Robert Mapplethorpe (American, 1946–1989)

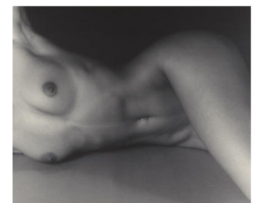
Gelatin silver print

48.5 x 58 cm (19 1/8 x 22 13/16 in.)

Jointly acquired by The J. Paul Getty Trust and the Los Angeles County Museum of Art. Partial gift of The Robert Mapplethorpe Foundation; partial purchase with funds provided by The J. Paul Getty Trust and the David Geffen Foundation.

© Robert Mapplethorpe Foundation

2011.9.24



15. *Ajitto*, 1981

Robert Mapplethorpe (American, 1946–1989)

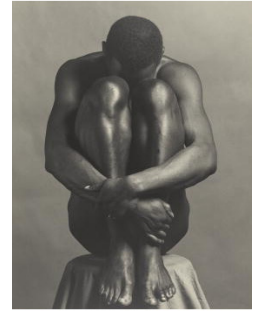
Gelatin silver print

45.4 x 35.5 cm (17 7/8 x 14 in.)

Jointly acquired by The J. Paul Getty Trust and the Los Angeles County Museum of Art with funds provided by The J. Paul Getty Trust and the David Geffen Foundation.

© Robert Mapplethorpe Foundation

2011.7.13



16. *Grapes*, negative 1985; print 2004

Robert Mapplethorpe (American, 1946–1989)

Gelatin silver print

38.5 x 38 cm (15 3/16 x 14 15/16 in.)

Jointly acquired by The J. Paul Getty Trust and the Los Angeles County Museum of Art with funds provided by The J. Paul Getty Trust and the David Geffen Foundation.

© Robert Mapplethorpe Foundation

2011.7.20



17. *Self Portrait*, negative 1980; print 1990

Robert Mapplethorpe (American, 1946–1989)

Gelatin silver print

35.6 x 35.6 cm (14 x 14 in.)

Jointly acquired by The J. Paul Getty Trust and the Los Angeles County Museum of Art. Partial gift of The Robert Mapplethorpe Foundation; partial purchase with funds provided by The J. Paul Getty Trust and the David Geffen Foundation.

© Robert Mapplethorpe Foundation

2011.9.21



**IMAGE AVAILABLE FOR PRESS**

18. *Thomas*, negative 1987; print 1994

Robert Mapplethorpe (American, 1946–1989)

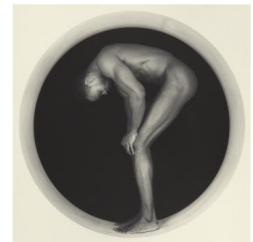
Gelatin silver print

48.8 x 48.8 cm (19 3/16 x 19 3/16 in.)

Jointly acquired by The J. Paul Getty Trust and the Los Angeles County Museum of Art with funds provided by The J. Paul Getty Trust and the David Geffen Foundation.

© Robert Mapplethorpe Foundation

2011.7.32

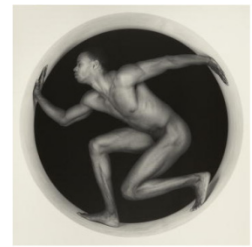


19. *Ken and Lydia and Tyler*, negative 1985; print 2004  
Robert Mapplethorpe (American, 1946–1989)  
Gelatin silver print  
38.4 x 38.2 cm (15 1/8 x 15 1/16 in.)  
Jointly acquired by The J. Paul Getty Trust and the Los Angeles County Museum of Art with funds provided by The J. Paul Getty Trust and the David Geffen Foundation.  
© Robert Mapplethorpe Foundation  
2011.7.19



[IMAGE AVAILABLE FOR PRESS](#)

20. *Thomas*, negative 1987; print 1994  
Robert Mapplethorpe (American, 1946–1989)  
Gelatin silver print  
48.8 x 48.8 cm (19 3/16 x 19 3/16 in.)  
Jointly acquired by The J. Paul Getty Trust and the Los Angeles County Museum of Art with funds provided by The J. Paul Getty Trust and the David Geffen Foundation.  
© Robert Mapplethorpe Foundation  
2011.7.31



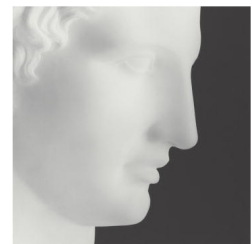
[IMAGE AVAILABLE FOR PRESS](#)

21. *Self Portrait*, 1985  
Robert Mapplethorpe (American, 1946–1989)  
Gelatin silver print  
38.7 x 38.6 cm (15 1/4 x 15 3/16 in.)  
Jointly acquired by The J. Paul Getty Trust and the Los Angeles County Museum of Art with funds provided by The J. Paul Getty Trust and the David Geffen Foundation.  
© Robert Mapplethorpe Foundation  
2011.7.21



[IMAGE AVAILABLE FOR PRESS](#)

22. *Ermes*, negative 1988; print 1990  
Robert Mapplethorpe (American, 1946–1989)  
Gelatin silver print  
49 x 49 cm (19 5/16 x 19 5/16 in.)  
Jointly acquired by The J. Paul Getty Trust and the Los Angeles County Museum of Art. Partial gift of The Robert Mapplethorpe Foundation; partial purchase with funds provided by The J. Paul Getty Trust and the David Geffen Foundation.  
© Robert Mapplethorpe Foundation  
2011.9.36



[IMAGE AVAILABLE FOR PRESS](#)

23. *Calla Lily*, negative 1988; print 1990  
Robert Mapplethorpe (American, 1946–1989)  
Gelatin silver print  
49 x 49 cm (19 5/16 x 19 5/16 in.)  
Jointly acquired by The J. Paul Getty Trust and the Los Angeles County Museum of Art. Partial gift of The Robert Mapplethorpe Foundation; partial purchase with funds provided by The J. Paul Getty Trust and the David Geffen Foundation.  
© Robert Mapplethorpe Foundation  
2011.9.26

**IMAGE AVAILABLE FOR PRESS**



24. *Ken Moody and Robert Sherman*, 1984  
Robert Mapplethorpe (American, 1946–1989)  
Platinum print  
49.4 x 50.2 cm (19 7/16 x 19 3/4 in.)  
Jointly acquired by The J. Paul Getty Trust and the Los Angeles County Museum of Art with funds provided by The J. Paul Getty Trust and the David Geffen Foundation.  
© Robert Mapplethorpe Foundation  
2011.7.23

**IMAGE AVAILABLE FOR PRESS**

