

JAPAN'S MODERN DIVIDE

THE PHOTOGRAPHS OF
HIROSHI HAMAYA AND KANSUKE YAMAMOTO



1. Hiroshi Hamaya
Japanese, 1915–1999
New Year's Ritual, Niigata Prefecture, 1940–1946
Gelatin silver print
Image: 30.6 x 20.2 cm (12 1/16 x 7 15/16 in.)
The J. Paul Getty Museum, Los Angeles
© Keisuke Katano
2012.30.8



2. Hiroshi Hamaya
Japanese, 1915–1999
Yaichi Aizu, Poet, Calligrapher, and Japanese Art Critic, 1947
Gelatin silver print
Image: 24 x 16 cm (9 7/16 x 6 5/16 in.)
Estate of Hiroshi Hamaya, Ōiso, Japan
© Keisuke Katano
EX.2013.2.38



3. Hiroshi Hamaya
Japanese, 1915–1999
Calendar Days of Asa Hamaya, 1948–1949
Gelatin silver print
Image: 17.8 x 12 cm (7 x 4 3/4 in.)
Estate of Hiroshi Hamaya, Ōiso, Japan
© Keisuke Katano
EX.2013.2.44



4. Hiroshi Hamaya
Japanese, 1915–1999
Woman Planting Rice, Toyama Prefecture, 1955
Gelatin silver print
Image: 42.1 x 28 cm (16 9/16 x 11 in.)
The J. Paul Getty Museum, Los Angeles
© Keisuke Katano
2009.34.1





5. Hiroshi Hamaya
Japanese, 1915–1999
Rice Harvesting, Yamagata Prefecture, 1955
Gelatin silver print
Image: 29.5 x 19.7 cm (11 5/8 x 7 3/4 in.)
The J. Paul Getty Museum, Los Angeles
© Keisuke Katano
2009.34.3



6. Hiroshi Hamaya
Japanese, 1915–1999
Blind Musicians, Niigata Prefecture, 1956
Gelatin silver print
Image: 30.1 x 20 cm (11 7/8 x 7 7/8 in.)
The J. Paul Getty Museum, Los Angeles
© Keisuke Katano
2012.30.5



7. Hiroshi Hamaya
Japanese, 1915–1999
Man in a Traditional Minoboshi Raincoat, Niigata Prefecture, 1956
Gelatin silver print
Image: 30.6 x 19.8 cm (12 1/16 x 7 13/16 in.)
The J. Paul Getty Museum, Los Angeles
© Keisuke Katano
2009.34.18



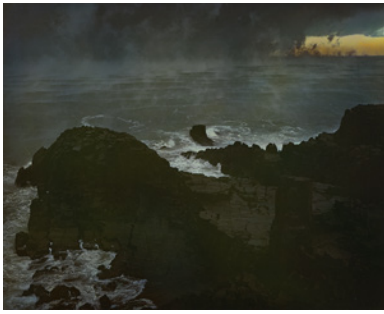
8. Hiroshi Hamaya
Japanese, 1915–1999
Sukayu Hot Spring, Aomori Prefecture, 1957
Gelatin silver print
Image: 14.8 x 24 cm (5 13/16 x 9 7/16 in.)
The J. Paul Getty Museum, Los Angeles
© Keisuke Katano
2009.34.6



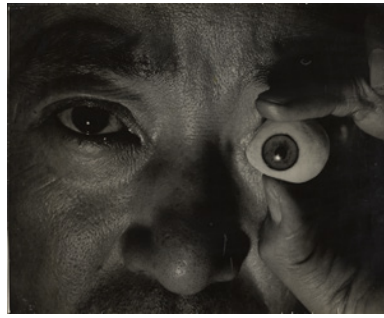
9. Hiroshi Hamaya
Japanese, 1915–1999
The United States-Japan Security Treaty Protest, Tokyo, May 26, 1960
Gelatin silver print
Image: 25.2 x 30.8 cm (9 15/16 x 12 1/8 in.)
The J. Paul Getty Museum, Los Angeles
© Keisuke Katano
2012.29.1



10. Hiroshi Hamaya
Japanese, 1915–1999
The United States-Japan Security Treaty Protest, Tokyo, June 15, 1960
Gelatin silver print
Image: 19.6 x 30.5 cm (7 11/16 x 12 in.)
The J. Paul Getty Museum, Los Angeles
© Keisuke Katano
2012.29.2



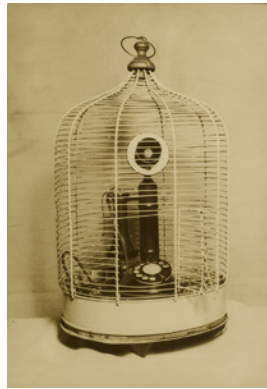
11. Hiroshi Hamaya
Japanese, 1915–1999
Eroded Sea Cliff at Tojinbo, Early Winter, Fukui Prefecture, Japan, 1960
Cibachrome print
Image: 24 x 29.9 cm (9 7/16 x 11 3/4 in.)
Estate of Hiroshi Hamaya, Ōiso, Japan
© Keisuke Katano
EX.2013.2.17



12. Kansuke Yamamoto
Japanese, 1914–1987
Self-Portrait, 1940
Gelatin silver print
Image: 46 x 56.4 cm (18 1/8 x 22 3/16 in.)
Private collection, entrusted to Tokyo Metropolitan Museum of Photography
© Toshio Yamamoto
EX.2013.2.153



13. Kansuke Yamamoto
Japanese, 1914–1987
Title unknown, 1940
Gelatin silver print
Image: 21.6 x 29.1 cm (8 1/2 x 11 7/16 in.)
Private collection, entrusted to Tokyo Metropolitan Museum of Photography
© Toshio Yamamoto
EX.2013.2.139



14. Kansuke Yamamoto
Japanese, 1914–1987
Buddhist Temple's Birdcage, 1940
Gelatin silver print
Image: 25.7 x 17.9 cm (10 1/8 x 7 1/16 in.)
Private collection, entrusted to Tokyo Metropolitan Museum of Photography
© Toshio Yamamoto
EX.2013.2.141



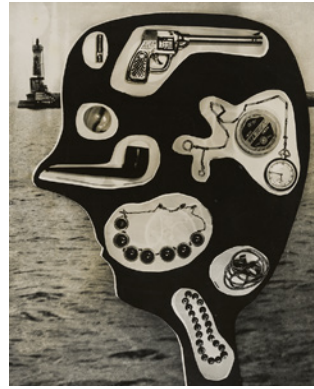
15. Kansuke Yamamoto
Japanese, 1914–1987
A Chronicle of Drifting, 1949
Collage
Image: 30 x 24.8 cm (11 13/16 x 9 3/4 in.)
Private collection, entrusted to Tokyo Metropolitan Museum of Photography
© Toshio Yamamoto
EX.2013.2.147



16. Kansuke Yamamoto
Japanese, 1914–1987
Stapled Flesh, 1949
Gelatin silver print
Image: 31.1 x 24.8 cm (12 1/4 x 9 3/4 in.)
From the Collection of Gloria Katz and Willard Huyck
© Toshio Yamamoto
EX.2013.2.94



17. Kansuke Yamamoto
Japanese, 1914–1987
Reminiscence, 1953
Gelatin silver print
Image: 31.1 x 25.4 cm (12 1/4 x 10 in.)
Anne and David Ruderman
© Toshio Yamamoto
EX.2013.2.93



18. Kansuke Yamamoto
Japanese, 1914–1987
Sleepy Sea, 1953
Gelatin silver print
Image: 37.6 x 31 cm (14 13/16 x 12 3/16 in.)
Private collection, entrusted to Tokyo Metropolitan Museum of Photography
© Toshio Yamamoto
EX.2013.2.160



19. Kansuke Yamamoto
Japanese, 1914–1987
My Thin-Aired Room, 1956
Gelatin silver print
Image: 34.9 x 42.9 cm (13 3/4 x 16 7/8 in.)
Private collection, entrusted to Tokyo Metropolitan Museum of Photography
© Toshio Yamamoto
EX.2013.2.170



20. Kansuke Yamamoto
Japanese, 1914–1987
Rose and Shovel, 1956
Gelatin silver print
Image: 31.9 x 34.9 cm (12 9/16 x 13 3/4 in.)
Private collection, entrusted to Tokyo Metropolitan Museum of Photography
© Toshio Yamamoto
EX.2013.2.165



21. Kansuke Yamamoto
Japanese, 1914–1987
A Forgotten Person, 1958
Chromogenic print
Image: 46.2 x 33 cm (18 3/16 x 13 in.)
The J. Paul Getty Museum, Los Angeles
© Toshio Yamamoto
2009.17.16



22. Kansuke Yamamoto
Japanese, 1914–1987
Butterfly, 1970
Gelatin silver print
Image: 16.4 x 11.4 cm (6 7/16 x 4 1/2 in.)
Private collection, entrusted to Tokyo Metropolitan Museum of Photography
© Toshio Yamamoto
EX.2013.2.190