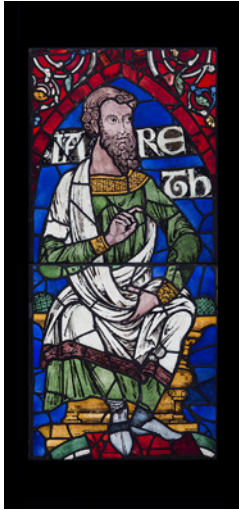
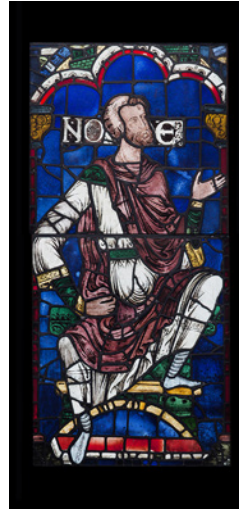


# Canterbury and St. Albans

## Treasures from Church and Cloister



1. *Jared*, from the Ancestors of Christ Windows  
Canterbury Cathedral, England, 1178–1180  
Attributed to the Methuselah Master  
Colored glass and vitreous paint, lead came  
148 x 68.5 cm (58 1/4 x 27 in.)  
Dean and Chapter of Canterbury, S. XXVIII, 2-3d  
©Robert Greshoff Photography, courtesy Dean and Chapter  
of Canterbury  
EX.2013.4.2



2. *Noah*, from the Ancestors of Christ Windows  
Canterbury Cathedral, England, 1178–1180  
Design attributed to the Methuselah Master  
Colored glass and vitreous paint, lead came  
148.8 x 69.5 cm (58 1/2 x 27 3/8 in.)  
Dean and Chapter of Canterbury, S. XXVIII, 2-3b  
©Robert Greshoff Photography, courtesy Dean and Chapter  
of Canterbury  
EX.2013.4.5



3. *David Playing the Harp*  
St. Albans Abbey, England, about 1130  
Artist: The Alexis Master  
St. Albans Psalter  
Tempera and gold on parchment  
Leaf: 31 x 21.9 cm (12 3/16 x 8 5/8 in.)  
Dombibliothek Hildesheim, HS St. God. 1, p. 56  
EX.2013.4.1.14



4. *Initial S: Psalm 68*  
St. Albans Abbey, England, about 1130  
St. Albans Psalter  
Tempera and gold on parchment  
Leaf: 31 x 21.9 cm (12 3/16 x 8 5/8 in.)  
Dombibliothek Hildesheim, HS St. God. 1, p. 202  
EX.2013.4.1.52





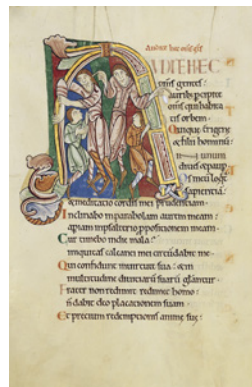
5. *Thara*, from the Ancestors of Christ Windows  
 Canterbury Cathedral, England, 1178–1180  
 Colored glass and vitreous paint, lead came  
 148.5 x 70 cm (58 1/2 x 27 1/2 in.)  
 Dean and Chapter of Canterbury, S. XXVIII, 2-3c  
 ©Robert Greshoff Photography, courtesy Dean and Chapter  
 of Canterbury  
 EX.2013.4.8



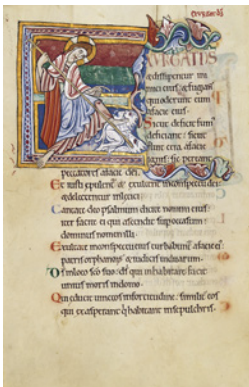
6. *Border Panel*, from the Ancestors of Christ Windows  
 Canterbury Cathedral, England, 1178–1180  
 Colored glass and vitreous paint, lead came  
 85.6 x 36.8 cm (33 11/16 x 14 1/2 in.)  
 Dean and Chapter of Canterbury, N. XX, 6  
 ©Robert Greshoff Photography, courtesy Dean and Chapter  
 of Canterbury  
 EX.2013.4.6.5



7. *Scenes from the Life of Saint Alexis*  
 St. Albans Abbey, England, about 1130  
 Artist: The Alexis Master  
 St. Albans Psalter  
 Tempera and gold on parchment  
 Leaf: 31 x 21.9 cm (12 3/16 x 8 5/8 in.)  
 Dombibliothek Hildesheim, HS St. God. 1, p. 57  
 EX.2013.4.1.15



8. *Initial A: Psalm 48*  
 St. Albans Abbey, England, about 1130  
 St. Albans Psalter  
 Tempera and gold on parchment  
 Leaf: 31 x 21.9 cm (12 3/16 x 8 5/8 in.)  
 Dombibliothek Hildesheim, HS St. God. 1, p. 166  
 EX.2013.4.1.41



9. *Initial E: Psalm 67:2*  
 St. Albans Abbey, England, about 1130  
 St. Albans Psalter  
 Tempera and gold on parchment  
 Leaf: 31 x 21.9 cm (12 3/16 x 8 5/8 in.)  
 Dombibliothek Hildesheim, HS St. God. 1, p. 198  
 EX.2013.4.1.50



10. *Initial C: Psalm 105. Christina Interceding with Christ*  
 St. Albans Abbey, England, about 1130  
 St. Albans Psalter  
 Tempera and gold on parchment  
 Leaf: 31 x 21.9 cm (12 3/16 x 8 5/8 in.)  
 Dombibliothek Hildesheim, HS St. God. 1, p. 285  
 EX.2013.4.1.70



11. *Initial I: Psalm 113*  
 St. Albans Abbey, England, about 1130  
 St. Albans Psalter  
 Tempera and gold on parchment  
 Leaf: 31 x 21.9 cm (12 3/16 x 8 5/8 in.)  
 Dombibliothek Hildesheim, HS St. God. 1, p. 304  
 EX.2013.4.1.76



12. *Initial K: Litany. The Trinity with Monk and Nuns*  
 St. Albans Abbey, England, about 1130  
 St. Albans Psalter  
 Tempera and gold on parchment  
 Leaf: 31 x 21.9 cm (12 3/16 x 8 5/8 in.)  
 Dombibliothek Hildesheim, HS St. God. 1, p. 403  
 EX.2013.4.1.101



13. *The Martyrdom of Saint Alban*  
 St. Albans Abbey, England, about 1130  
 St. Albans Psalter  
 Tempera and gold on parchment  
 Leaf: 31 x 21.9 cm (12 3/16 x 8 5/8 in.)  
 Dombibliothek Hildesheim, HS St. God. 1, p. 416  
 EX.2013.4.1.105



14. *The Journey of the Magi*  
 St. Albans Abbey, England, about 1130  
 Artist: The Alexis Master  
 St. Albans Psalter  
 Tempera and gold on parchment  
 Leaf: 31 x 21.9 cm (12 3/16 x 8 5/8 in.)  
 Dombibliothek Hildesheim, HS St. God. 1, p. 24  
 EX.2013.4.1.8



15. *The Women at the Tomb*  
 St. Albans Abbey, England, about 1130  
 Artist: The Alexis Master  
 St. Albans Psalter  
 Tempera and gold on parchment  
 Leaf: 31 x 21.9 cm (12 3/16 x 8 5/8 in.)  
 Dombibliothek Hildesheim, HS St. God. 1, p. 50  
 EX.2013.4.1.10



16. *Pilgrim's Badge of the Shrine of Saint Thomas Becket at Canterbury*  
 English (Canterbury), 1350-1400  
 Cast tin-lead alloy  
 7.9 x 6.4 x 0.3 cm (3 1/8 x 2 1/2 x 1/8 in.)  
 The Metropolitan Museum of Art. Gift of Dr. and Mrs. W. Conte, 2001 (2001.310)  
 © The Metropolitan Museum of Art. Image Source: Art Resource, NY  
 EX.2013.4.14



17. *Reliquary Casket with Scenes from the Martyrdom of Saint Thomas Becket*  
English, about 1173–1180  
Silver, partial gilt, niello, garnet  
5.5 x 7 x 4.8 cm (2 3/16 x 2 3/4 x 1 7/8 in.)  
The Metropolitan Museum of Art. Gift of J. Pierpont Morgan, 1917  
(17.190.520)  
© The Metropolitan Museum of Art. Image Source: Art Resource, NY  
EX.2013.4.16